

AEROTRAK® PORTABLE PARTICLE COUNTER MODEL 9500



The TSI AeroTrak® 9500 Portable Particle Counter offers best-in-class features and versatility. Perform ISO 14644-1 classifications and complete certifications of EU GMP facilities by sampling 1 m³ of air in just 10 minutes! Particle count data can be conveniently viewed on screen, downloaded using TrakPro™ Lite Secure software, or printed directly to the integrated printer. Compatible with TSI's accurate ventilation probes that measure air velocity/temperature/RH, the Model 9500 is a complete solution for your certification needs. The combination of an optional electronic filter scanner with up to 26 ft of tubing, make this the best instrument for in-place filter testing.

This particle counter can generate pass/fail reports for ISO 14644-1, EU GMP Annex 1, and FS209E, via the onboard printer and the supplied TrakPro Lite Secure download software. Multiple particle counter configurations can be conveniently stored and uploaded as needed. It can be used as a stand-alone particle counter or integrated into a facility monitoring system like TSI's FMS 5.

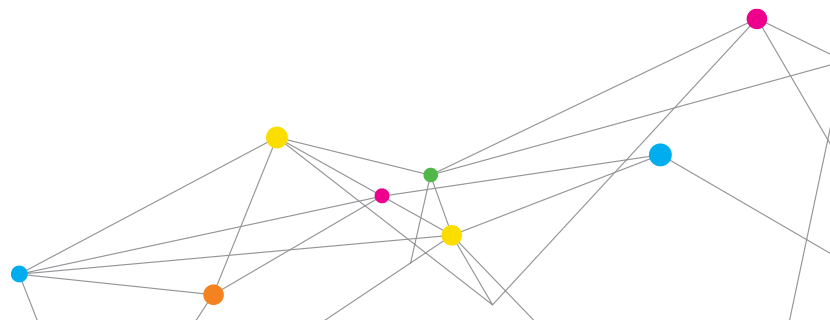
The Model 9500 complies with all the stringent requirements set forth in ISO 21501-4. It is calibrated with NIST traceable PSL spheres using TSI's world-class Classifier and Condensation Particle Counters, the recognized standard for particle measurements. Backed with a standard two-year warranty and TSI's long-standing reputation for high quality, there are no other particle counters like it on the market today.

Features and Benefits

- + 0.5 to 25 µm size range
- + Up to six channels of simultaneous data
- + 3.53 CFM (100 L/min) flow rate
- + Complies with all requirements of ISO 21501-4
- + Best choice for filter testing in clean rooms
- + Data storage: 250 zones, 999 locations, and 10,000 samples
- + USB, USB Storage Device and Ethernet data transfer
- + Industry's loudest audible alarm
- + Easy icon-driven touch screen operation
- + Onboard reports for ISO-14644-1, EU GMP Annex 1, and FS209E
- + External certification reports via TrakPro Lite Secure
- + Allows storage and recall of specific Recipes and Zone configurations
- + Displays up to three environmental parameters
- + Stainless steel enclosure
- + Lightweight
- + Stand-alone or integrate into a facility monitoring system



UNDERSTANDING, ACCELERATED



SPECIFICATIONS

AEROTRAK PORTABLE PARTICLE COUNTER MODEL 9500

| 9500 | |
|--------------------------------|--|
| Size Range | 0.5 to 25 µm |
| Particle Channel Sizes | 0.5, 0.7, 1.0, 3.0, 5.0, 10.0 µm (additional channel sizes available) |
| Size Resolution | <15% @ 0.5 µm (ISO 21501-4) |
| Counting Efficiency | 50% at 0.5 µm, 100% for particles > 0.75 µm (per ISO 21501-4 and JIS) |
| Concentration Limit | 425,000 particles/ft ³ (15,000,000/m ³) @ 10% coincidence loss |
| Light Source | Long life laser diode |
| Zero Count | <1 count per 5 minutes (per ISO 21501-4 and JIS B9921) |
| Flow Rate | 3.53 CFM (100 L/min) ±5% accuracy (meets ISO 21501-4 and JIS B9921) |
| Flow Rate Control | Electronic, automatic closed loop (patented* flow control technology) |
| Sample Tube Extension | Up to 26.2 ft (8 m) |
| Sampling Modes | Manual, automatic, beep; cumulative/differential; count or concentration |
| Sampling Time | 1 second to 99 hours |
| Sampling Frequency | 1 to 9999 cycles or continuous |
| Exhaust | Internally HEPA filter |
| Vacuum Source | Internal pump |
| Communication Mode | Modbus [®] TCP over Ethernet or USB |
| Audible Alarm | Built-in; >85 dB at 1 meter (adjustable) |
| Status Indicators | Low battery, flow, laser |
| Alarm Output | Dry contacts, closed when alarm is engaged |
| Alarm Limits | Programmable for all particle channels |
| Display | VGA 5.7-inch (14.5 cm) touch-screen display |
| Languages | English, German, French, Spanish, Japanese, Chinese (simplified), Italian |
| Printer | Built-in thermal printer (also available without printer) |
| Printer Output | Prints in all available languages |
| Environmental Sensor Interface | Supports TSI Probe Models: 960, 962, 964, 966 (air velocity/temp/RH) and Temp/RH probe |
| External Chemical Resistance | Isopropyl alcohol, chlorinated solution, hydrogen peroxide |
| Environmental Sensor Interface | Supports TSI air velocity, temperature and relative humidity probes |
| Software | Compatible with TrakPro™ Lite Secure and FMS 5 software |

*Patent Number 6,167,107

Specifications are subject to change without notice.

AeroTrak, TSI and the TSI logo are registered trademarks, and TrakPro is a trademark of TSI Incorporated.

Modbus is a registered trademark of Modicon, Inc.



UNDERSTANDING, ACCELERATED

TSI Incorporated - Visit our website www.tsi.com for more information.

| | | | |
|----------------|-------------------------------|------------------|------------------------------|
| USA | Tel: +1 800 874 2811 | India | Tel: +91 80 67877200 |
| UK | Tel: +44 149 4 459200 | China | Tel: +86 10 8251 6588 |
| France | Tel: +33 4 91 11 87 64 | Singapore | Tel: +65 6595 6388 |
| Germany | Tel: +49 241 523030 | | |

| | |
|-----------------------|--|
| Unit ID | Configurable IP address |
| Security | 2-level password protection to lock out usage and configuration |
| Data Storage | 250 Zones |
| | 999 Locations |
| | 10,000 sample records including: date, time, six total particle size channels, flow status, and instrument status |
| Data Transfer | Via USB storage device, connection to the TrakPro Lite Secure software through Ethernet or USB cable, or optional TSI FMS Software |
| Reports | Provides Pass/Fail on ISO 14644-1, EU GMP, and FS209E reports |
| Calibration | NIST traceable using TSI calibration system |
| Calibration Frequency | Recommended minimum of once per year |
| Dimension (H x W x D) | 9.5 in. x 9.0 in. x 9.2 in. (24.1 cm x 23.0 cm x 23.2 cm) (without isokinetic inlet) |
| Weight | 14.2 lbs (6.44 kg) with two batteries |
| Power | 110 to 240 VAC universal power supply |
| Battery | Removable/rechargeable Li-Ion batteries (2 battery slots) |
| Battery Life | >2 hours of continuous operation |
| Battery Recharge | 4 hours (when idle) |
| External Surface | Stainless steel |
| Operating Range | 41° to 95°F (5° to 35°C), 20% to 95% RH noncondensing |
| Storage Range | 32° to 122°F (0° to 50°C), up to 98% RH noncondensing |
| Standards | ISO 21501-4, CE, JIS B9921 |
| Warranty | Two years, extended warranties available |
| Included Accessories | Printed QuickStart guide, operating manual on CD, power supply, battery, barbed inlet, isokinetic probe, tripod, tubing, purge filter, printer paper, USB cable and TrakPro™ Lite Secure Software |
| Optional Accessories | Electronic filter scanning probe, basic filter scanning probe, TSI velocity probes, Temp/RH probe, additional battery, dual port external battery charger, isokinetic probes, sample tubing, carrying case |